

PANHellenic RECRUITMENT LOOKBOOK 2017



UNIVERSITY OF ARKANSAS

IMPORTANT DATES

June 01

Registration

Opens



July 15

Registration

Closes at 5 p.m.



August 01

Letters of
Recommendation
are due



August 10-11

Move Into

Housing



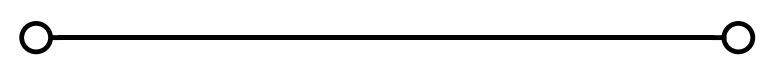
August 11

Recruitment
Orientation

August 12-13

Open House

Round



August 14-15

Philanthropy

Round



August 16-17

Sisterhood

Round



August 18

Preference

Round



August 19

Bid Day
at 10 a.m.

LETTER FROM THE VP OF RECRUITMENT

ALEX LITTLE



On behalf of the University of Arkansas Panhellenic Council, I would like to thank you on taking the chance to become a part of the best Greek Life in the nation! We are so excited to see the impact you will make on this University.

Participation in Recruitment is your first step to the many opportunities Greek Life has to offer! Here at Arkansas, we are dedicated to the positive development of each member of the Greek community through the planning and participating in enriching programs. The leadership and tradition that comes with joining a sorority will promote growth, scholarship, service, character refinement, and lifelong friendships. I cannot stress enough that you make the most of your recruitment experience and ENJOY it! Keeping an open mind and having a positive attitude are two major key factors that will contribute to an enjoyable recruitment process. We have 11 strong Panhellenic chapters that are so excited to meet you throughout the Recruitment process, and it is an honor to be a member of any of our organizations. Recruitment is an exciting week of meeting new people, making close friends, and having new opportunities come your way. So many young women will surround you and you never know... they might be your future sisters! Recruitment Team is working so hard to make this an enriching and exciting experience for you! Get ready for a great week!

LETTER FROM THE DIRECTOR OF RECRUITMENT COUNSELORS

LIZZY ESTES

We're so thrilled to have you here at the University of Arkansas! We are even more excited to have you join our Greek Life community and be all in for Panhellenic Recruitment. You are about to have a blast meeting new, college women throughout the week and later on in your chapter. Some of the first women you will meet during recruitment will be your own Gamma Chi; a woman who is encouraging you all day and wants the best for you. They have disaffiliated themselves from their own sorority to help seek out your fit here in Greek Life. My hope is that your bond with your Gamma Chi goes beyond the week of recruitment – make that friendship long – lasting! At this University, you can find numerous benefits from putting in dedicated work in the Greek Life community. Being a part of the Panhellenic community has been an amazing experience and I hope you delight in it as much as we do. Enjoy your time exploring all eleven chapters and I hope you make the most of your time here!



LETTER FROM THE PANHELLENIC PRESIDENT

DANICA RIDGEWAY



Welcome to the University of Arkansas! On behalf of the Panhellenic Council, I would like to extend our thanks and our excitement that you have chosen to participate in Panhellenic Recruitment 2017! Our organization is an incredible place to build lifelong friendships, find leadership opportunities, engage in philanthropy and community service events, and excel academically. All eleven of our chapters are so excited to meet you and welcome you into their sisterhood! Wishing you well in Recruitment, and the rest of your college career! We can't wait to cheer you on during Recruitment and for the next four years!

“Wherever life plants you, bloom with grace.”

LETTER FROM THE DIRECTOR OF GREEK LIFE

PARICE S. BOWSER

Welcome to Greek life at the University of Arkansas! What an exciting time to become a part of an ever growing, but vibrant Greek community. With over 6,318 UA Greek Leaders and 34 outstanding chapters, we strive each day to excel in the areas of academic excellence, community service & philanthropy, brotherhood & sisterhood, and cultural appreciation. Our ultimate goal is to not only develop lifelong friendships, but also to actively engage and build exemplary Greek men and women for life!

As you read the following pages, please remember that this magazine was designed with YOU in mind. There is valuable information on each page intentionally written to help you prepare for this incredible experience. In addition, there is information on our website about how to register, tips to secure a recommendation letter, and much more! So, please visit us at uagreeks.uark.edu today and sign up for recruitment by no later than July 15!

Again, we appreciate your interest in Greek Life and look forward to meeting you at Sorority Recruitment 2017!



MEET YOUR
PANHELLENIC
EXECUTIVE BOARD



DANICA
President



EMMA
Vice President



ALEX
Vice President of Recruitment



LAYNE
Vice President of Public Relations



HARLEY
Vice President of Judicial Affairs & Risk Management



HAILEY
Vice President of Scholarships & Educational Programs



BREE
Vice President of Philanthropy & Community Service



LIZZY
Director of Recruitment Counselors

THE WEEK AT A GLANCE

Orientation

Orientation is a session the evening before formal recruitment begins. We will go over the breakdown of the recruitment process, what to wear and what to expect. At this time you will meet your recruitment counselor (Gamma Chi) and the other members of your Gamma Chi group. This is a very important part of the recruitment process to prepare you for the next week and get you pumped for the next 4 years!

Open House Round

During the first two days of Recruitment, you will visit all 11 sororities with your recruitment group. Each party is 15 minutes long, and the day moves quickly. You will be greeted at each chapter with door songs as you are welcomed into the party! Feel free to ask the members questions and tell them a little about yourself. Most importantly, have fun!

Philanthropy Round

Going into Philanthropy Day you will select the 8 chapters you would like to return to. During this round you will have the opportunity to talk with the chapters regarding their philanthropic efforts. You will also get to see a video that shows what the chapters do to raise money and support their cause.

Sisterhood Round

Days 5 and 6 of Recruitment are a time for you to gain a deeper understanding of the values of the 5 chapters you are invited to. This is the time to ask any questions you may have before making your decision for Preference Day. You will be doing a lot of walking throughout the living areas. Picture yourself as a sister of the organizations you are visiting.

Preference Round

The final day of Recruitment is Preference Day. For this round you will be asked to wear a cocktail dress in a style that best represents your personality. During this round, you will have the opportunity to visit up to 2 chapters before making your final selection. This is an important day not only for you, but for the chapters also.

Bid Day

Bid Day is the day you will receive your official invitation to join a sorority! This is a very exciting time for both you and the chapters. Bids are distributed at the Greek Theater on campus. Parents are welcome to attend the bid day ceremony!

what to wear



These are examples of outfits you could wear during the week of Recruitment! With the exception of Preference Round.

T-Shirts

Each day of Recruitment, except Preference, you will be provided with a t-shirt to wear. Your Gamma Chi will give you a new t-shirt before each new round!

Shorts/Skirts/Pants

In Arkansas, the beginning of August is very hot and humid, so you will probably want to wear shorts or a skirt. We encourage you to wear whatever is most comfortable for you.

Shoes

You get to decide what shoes to wear throughout Recruitment. Just remember that every day you will be standing and walking a lot, so make sure you are comfortable!

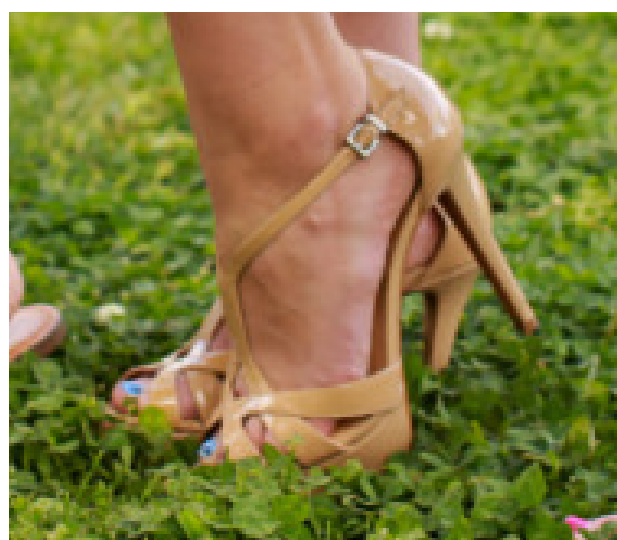
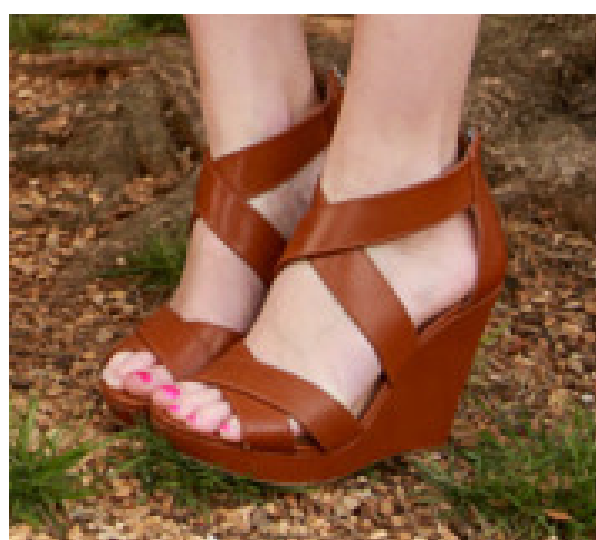


P
R
E
F
E
R
E
N
C
E

Cocktail Attire

The final round of Recruitment is Preference, which is also the dressiest round of Recruitment. It lasts all day and into the evening. PNMs should wear a cocktail dress. These dresses should be tasteful and comfortable. It is a good idea to have a pair of flip flips or flats to wear as you walk from chapter to chapter. You may also want to bring a change of clothes to wear after your parties are over.

Shoes



Recruitment Counselors

GAMMA CHIS

What They Do:

Recruitment is an exciting and memorable experience, but it can be a hectic and emotional time as well. Recruitment counselors, referred to as Gamma Chis, are undergraduate women representing the various sororities at the U of A, who have disaffiliated from their chapters for the week of recruitment to help you through the process.

These women have been through extensive training in preparation for this week and have participated in recruitment themselves. They are available for you 24 hours a day as impartial listeners, guides and friends. Get to know your Gamma Chi because they want to get to know you and help you make the best decision based on your personality and interests.

You will meet your Gamma Chi for the first time at Recruitment Orientation. You will also have the opportunity to meet with her each day of Recruitment. These women are excited to help you find your letters!



What NOT to wear



During the Week–

Please do not alter or re-design any of your recruitment t-shirts.

Preference Round–

For Preference, we recommend that you avoid wearing anything too tight, short or revealing.



ALPHA CHI OMEGA



A
X
Ω



Nickname: A Chi O

Philanthropy: Domestic Violence

GPA: 3.08

Colors: Red & Green

Flower: Red Carnation

Symbol: Lyre

Date Founded: Oct. 15, 1885

Established at the U of A: 1961

Recolonized: 2012

Famous Alumnae

- Dr. Condoleezza Rice, former Secretary of State
- Dawn Wells, Mary Ann on Gilligan's Island
- Tristan Rehn Sutter, The Original Bachelorette
- Melissa Rycroft, Dallas Cowboys Cheerleader and Dancing with the Stars Champion

Letters of Recommendation

This year AXO would like recommendation letters to be filled out electronically on their national website or emailed to axocribark@gmail.com.

ALPHA DELTA PI

A

Δ

Π



Nickname: A-D-Pi

Philanthropy: Ronald McDonald
House Charities

GPA: 3.28

Colors: Azure Blue & White

Flower: Woodland Violet

Symbol: Diamond

Mascot: Lion

Date Founded: May 15, 1851

Established at the U of A: 1967

Famous Alumnae

- Kelli Finglass, Director of the Dallas Cowboy Cheerleaders
- Emily Proctor, CSI Miami
- Karen Fairchild, member of Little Big Town
- Caroline Bryan, country music singer Luke Bryan's wife

Letters of Recommendation

Madeline Palasota
519 W. Oakland
Fayetteville, AR 72702

ALPHA OMICRON PI



A
O
Π

Nickname: A-O-Pi

Philanthropy: Juvenile Arthritis

GPA: 3.22

Colors: Cardinal Red

Flower: Jacqueminot Rose

Symbol: Ruby and Sheaf of Wheat

Mascot: Panda

Date Founded: Jan. 2, 1897

Established at the U of A: 2006

Famous Alumnae

- Kate Allen, wife of American Idol winner Kris Allen
- Debbie Matenopoulous, TV anchor
- Parvati Shallow, winner of Survivor Micronesia - Fans vs Favorites
- Alexa Jones, Miss Alabama 2006

Letters of Recommendation

This year AOΠ would like recommendation letters to be filled out electronically on their national website!

Go to <http://www.alphaomicronpi.org/membership-information-form>. Complete and submit as indicated.

Chi Omega

X
Ω



Nickname: Chi O

Philanthropy: Make-A-Wish

GPA: 3.42

Colors: Cardinal & Straw

Mascot: Owl

Flower: White Carnation

Symbols: Skull & Crossbones

Date Founded: April 5, 1895

Established at U of A: 1895

Famous Alumnae

- Senator Blanche Lincoln, Arkansas Senator
- Sela Ward, Actress
- Lucy Liu, Actress
- Heather Locklear, Actress

Letters of Recommendation

McKenna Whitaker
940 W. Maple St.
Fayetteville, AR 72701

Delta Delta Delta



Nickname: Tri Delt

Philanthropy: St. Jude's

GPA: 3.4

Colors: Silver, Gold & Blue

Mascot: Dolphin

Flower: Pansy

Date Founded: Nov. 28, 1888

Established at U of A: 1913

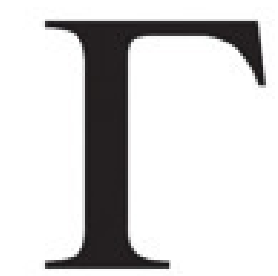
Famous Alumnae

- Katie Couric, news broadcaster
- Donna Axum (Delta Iota), Miss America 1964
- Jen Bielema, First Lady of Arkansas Football
- Joanna Garcia, actress

Letters of Recommendation

Abby Dellinger or Reference Chair
P.O. Box 1129
Fayetteville, AR 72701

Delta Gamma



Nickname: DG

Philanthropy: Service for Sight

Colors: Bronze Pink & Blue

Flower: Cream Rose

Symbol: Anchor

Date Founded: Dec. 25, 1873

Established at U of A: 1930

Recolonized: 2016

Famous Alumnae

- Ann Daly, President of DreamWorks Animation
- Kelly Ayotte, US Senator from New Hampshire
- Sharen Turney, President and CEO of Victoria's Secret
- Erin Condren, founder of a personalized print shop, erincondren.com

Letters of Recommendation

Alpha Omega Chapter of Delta Gamma
Attention: Alpha Omega Sponsorship, Spring 2017
P.O. Box 1289
12 W. Dickson Street
Fayetteville, AR 72701

Kappa Delta

K

Δ



Nickname: Kay Dee

Philanthropy: Girl Scouts

GPA: 3.35

Colors: Olive Green & White

Mascot: Teddy Bear

Flower: White Rose

Symbols: Nautilus Shell, Dagger

Date Founded: Oct. 23, 1897

Established at U of A: 1989

Famous Alumnae

- Georgia O'Keeffe, artist
- Nancy Ties Marshall, Olympic gymnast
- Leigh Anne Tuohy, inspiration for the movie, The Blind Side
- Patricia Polito Milker, co-founder of Vera Bradley

Letters of Recommendation

Kappa Delta Sorority
Attn: Stephanie Hill
404 W. Maple Street
Fayetteville, AR 72701

Kappa Kappa Gamma

K
K
Γ



Nickname: Kappa

Philanthropy: Reading is Fundamental

GPA: 3.46

Colors: Dark Blue & Light Blue

Mascot: Owl

Flower: Iris

Symbols: Golden Key

Date Founded: Oct. 13, 1870

Established at U of A: 1923

Famous Alumnae

- Kate Spade, designer
- Lo Bosworth, actress (Laguna Beach)
- Sophia Bush, actress (One Tree Hill)
- Mariska Hargitay, actress (Olivia Benson, Law & Order: SVU)

Letters of Recommendation

Kappa Kappa Gamma has a new online system for recommendation letters. All formal recs will need to be submitted online at kkg.org/references.

Letters of support may be mailed to:

Caroline Fox
800 W. Maple Street
Fayetteville, AR 72701

Phi Mu



Nickname: Phi Mu

Philanthropy: Children's Miracle

GPA: 3.23 Network Hospital

Colors: Rose & White

Mascot: Lion

Flower: Rose Carnation

Symbol: Quatrefoil

Date Founded: March 4, 1852

Established at U of A: 1923

Recolonized: 2012

Famous Alumnae

-Barbara Broyles, late wife of coach Frank Broyles

-Susan Harling, inspiration for the play and movie
Steele Magnolias

- Kathryn Stockett, author of The Help

-Kimberly Schlapman, member of the band Little Big
Town

Letters of Recommendation

Heather Becker

1149 S. Zenith Loop

Apartment D-203

Fayetteville, AR 72701

Pi Beta Phi

Π

B

Φ



Nickname: Pi Phi

Philanthropy: Children's

GPA: 3.39 Literacy

Colors: Wine & Silver Blue

Mascot: Angel

Flower: Carnation

Symbols: Arrow

Date Founded: April 28, 1967

Established at U of A: 1909

Famous Alumnae

- Faye Dunaway, actress
- Patricia Neal, actress
- Jennifer Garner, actress
- Jane Sibbett, actress

Letters of Recommendation

Sophie Overton
502 W. Maple St.
Fayetteville, AR 72703

Zeta Tau Alpha

Z
T
A



Nickname: Zeta

Philanthropy: Breast Cancer
Education

GPA: 3.43

Colors: Turquoise Blue & Gray

Mascot: Teddy Bear

Flower: White Violet

Symbols: Crown & Strawberry

Date Founded: Oct. 15, 1898

Established at U of A: 1903

Famous Alumnae

- Helen Wisner (UA Alumna), Miss Arkansas USA 2014
- Erin Andrews, current sports broadcaster for Fox Sports
- Phyllis George Brown, Miss America 1971 and first female sportscaster in 1975
- Susan Ford Bales, daughter of President Gerald Ford

Letters of Recommendation

Maddie Zoglmann
ztaepsilon@zetaepsilon.com

GREEK LIFE

FAQs

How do I sign up for recruitment?

In order to sign up for recruitment you must register online through the University of Arkansas Office of Greek Life Website at uagreeks.uark.edu.

Do I need letters of recommendation to go through recruitment?

Letters of recommendation are not required to go through recruitment, but it is highly encouraged that each PNM have at least one letter of recommendation per chapter.

Letters of recommendation are simply letters of reference written by an alumna of a sorority at the University of Arkansas. It is appropriate and highly encouraged for you to obtain your own letters of recommendation. You can begin this process by informing friends, teachers, and relatives that you are participating in formal recruitment at the University of Arkansas. More information regarding how to obtain letters of recommendation can be found on our website.

What does it mean if I am a legacy?

Being a legacy to a chapter does not in any way guarantee you a bid or an invitation to any round of recruitment. However, chapters are aware if a PNM is a legacy and may consider this when choosing who to invite to parties.

How will the chapters know my GPA?

When you register online for recruitment, you will enter your cumulative GPA. That GPA will be verified with the university's records. Please be sure to submit your final transcript to the U of A Admissions no later than August 1, 2017.

Can I attend ROCK Camp?

Yes! PNMs may attend R.O.C.K. Camp Service, R.O.C.K. Adventure, or R.O.C.K. Camp Session I.

If there is an emergency how will someone get a hold of me?

You will not be able to carry a cell phone during recruitment or on Preference Day. If your family were to experience an emergency they should contact the Office of Greek Life at (479) 575-5001 or via email at gogreek@uark.edu.

Head over to uagreeks.edu to watch our video on what to expect from recruitment.

GREEK LIFE

FAQs

Do I need to provide my own meals during recruitment?

You will use your on-campus meal plan during recruitment. However, you may want to have a little breakfast in your room because recruitment may begin before the dining halls open. We will also provide light snacks throughout the day.

Can I still be involved in other things on campus if I am in a sorority?

Absolutely!! Sorority women are some of the most involved on campus, and many chapters require members to be involved in at least one other Registered Student Organization. In the past five years, seven Panhellenic women have served as student government officers, and two women have served as student body president.

What does accepting a bid entail?

Accepting a bid means that you sign a Bid Card from a specific chapter saying that you intend to pursue membership in their organization and not with any other chapter. Once you sign a Bid Card you are ineligible to sign a Bid to any other organization for one academic year.

What are my chances of getting a bid?

Bids are not guaranteed at any point during recruitment. However last year we had a 92% retention rate. We strongly encourage all PNMs to keep an open mind through the process. If you are nervous about receiving a bid it is best to talk with your Gamma Chi. She can help you better understand the process.



FINANCIAL

INFORMATION

Shortly after receiving a bid, your new chapter will make you aware of the financial commitment for joining their organization. It is not uncommon for fees to include Membership Dues, Parlor Fees, a one-time New Member Fee, and/or some sort of T-shirt fee. Chapters DO NOT expect New Members to pay all of their fees at one time, and all chapters offer payment plans. Chapters, as well as the Panhellenic Council, give away thousands of dollars in scholarships each year. Some scholarships are specifically for New Members. If you are concerned about the financial obligation of membership, you should speak with your New Member Educator or Chapter President.

Average Annual Costs per Academic Year

- New Member** – defined as the first full year of membership in an organization. \$2,360
- Out of House** – defined as the second-fourth years of membership when not living in the chapter facility. \$1,992
- In House** – defined as the second-fourth years of membership when living in the chapter facility (room and board). \$7,474

UA GREEK LIFE 4 COUNCILS, 1 COMMUNITY

Even though there are four Greek Councils on campus (Panhellenic Council, National Pan-Hellenic Council, United Greek Council and Interfraternity Council), we all support one another in everything we do. All four councils work together as one community to make Greek Life at the University of Arkansas the best it can be.

N
P
H
C



U
G
C



I
F
C



GREEK GAB

Active: a fully initiated member of a fraternity or sorority.

Alumna(e): an initiated member of a sorority that has left the collegiate Greek system.

Bid: a formal invitation to become a New Member of a sorority

Chapter: refers to an individual fraternity or sorority house; chapter names are different on all college campuses.

Function: a social gathering of Greek organizations

Greek: a member of a fraternity or sorority.

Hazing: any activity that is required of an Associate or New Member that is not required of an Active Member

IFC (Interfraternity Council): the coordinating body of fraternities on a college campus

Initiation: the traditional Ritual the brings a New Member into full membership

Legacy: a potential member of a sorority who is a daughter, granddaughter, or sister of a member of a Greek organization

National: a term referring to the central organization of a given sorority or fraternity.

NPC (National Panhellenic Conference): a conference comprised of 26 national sororities.

NPHC (National Pan-Hellenic Conference): an organization composed of 9 men's and women's fraternities, all of which are historically African American.

New Member: a member of a fraternity or sorority who has not yet been initiated.

Panhellenic Council: the coordinating body of sororities on a college campus.

Potential New Member (PNM): a person participating in Recruitment or interested in becoming part of the Greek system.

Quota: the maximum number of New Members that a sorority or fraternity can take during Formal Recruitment.

Recommendation: a written recommendation for a PNM from an alumna of a chapter.

Recruitment: a mutual selection process where chapters seek New Members and PNMs seek membership.

Release: the process of selection by both PNMs and Chapters in narrowing down choices during Recruitment.

United Greek Council (UGC): the coordinating body of 2 multicultural fraternities and sororities at the U of A.

SPONSORS

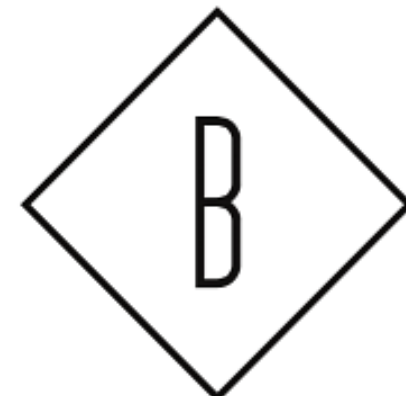
RECRUITMENT 2017

RIFFRAFF
CLOTHES + HOME

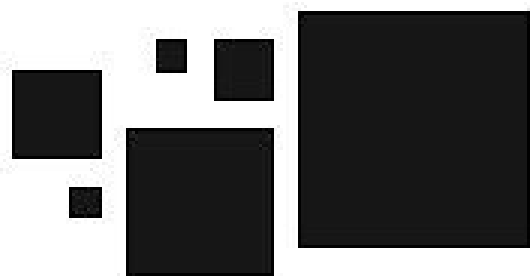
E. Leigh's
contemporary boutique

MPD

MRS. POLKA DOT
Preppy. Personalized. Perfect



U N L I M I T E D
B-UNLIMITED.COM

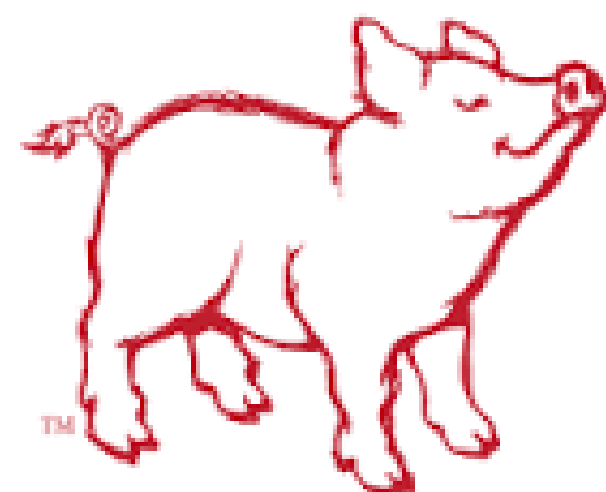


university of arkansas
bookstore
uofastore.com



LG Lauren James

The Copper Pig



SOUTHERN TREND
CLOTHING

FLORA
7 E. MOUNTAIN
FAYETTEVILLE, AR

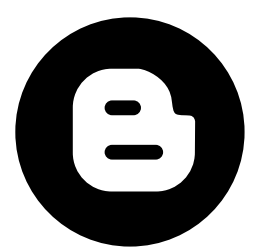

FirstSecurity
Bank

WE LOOK FORWARD TO MEETING YOU!

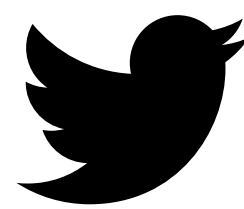
-PANHELLENIC EXECUTIVE BOARD



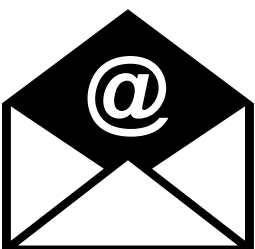
CONNECT WITH US



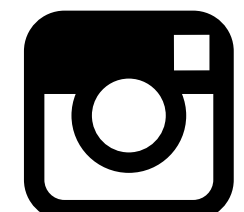
uarkpc.blogspot.com



[@uarkpanhellenic](https://twitter.com/uarkpanhellenic)



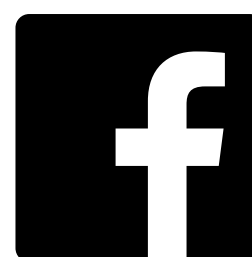
gogreek@uark.edu



[@uarkpanhellenic](https://www.instagram.com/uarkpanhellenic)



uagreeks.uark.edu



University of Arkansas
Greek Life